

# **BFV-100**

## **Butterfly Valve**

### **Instruction Manual**

#### **▲ WARNING**

Failure to follow these instructions or to properly install and maintain this equipment could result in gas leakage, fire or explosion causing property damage and personal injury or death.

Oasis products must be installed, operated and maintained by trained and competent personnel in accordance with all applicable local codes, rules and regulations in addition to the Oasis Instructions.

Oasis Engineering Ltd. will not be held liable in such circumstances where installation, operation and maintenance procedures were performed by incompetent personnel resulting in improper assembly, unsafe operation, equipment damage or personal injury.

Oasis recommends that all service technicians should watch the Product Servicing Video before attempting to service this part.

Oasis Engineering Ltd  
129 Birch Avenue, Tauranga, New Zealand.  
T: +64 7 928 3808  
E: [info@oasisNGV.com](mailto:info@oasisNGV.com)  
W: [www.OasisNGV.com](http://www.OasisNGV.com)



# Warning!

**Ensure that the pipeline is relieved of all pressure and media before removing or installing a valve. Can cause serious harm to both infrastructure and personnel if safety precautions are not followed.**

**Oasis recommends considering the use of the following PPE when working with high pressure along with any other site specific health and safety requirements:**



Foot Protection



Hearing Protection



Safety Helmets



Hand Protection



Safety Glasses

---

## Tools Required

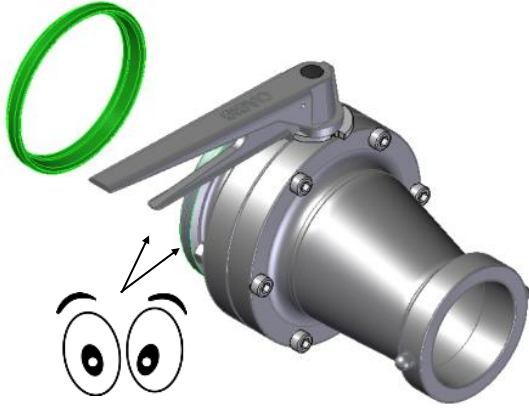


Food Grade Grease  
(FDA approved lubricant)



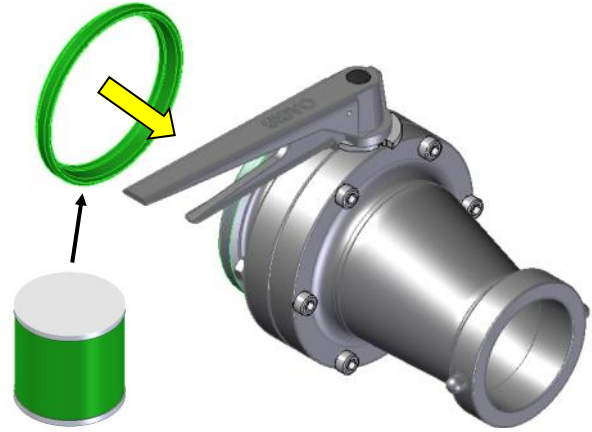
C Spanner

1. Inspect parts for damage.

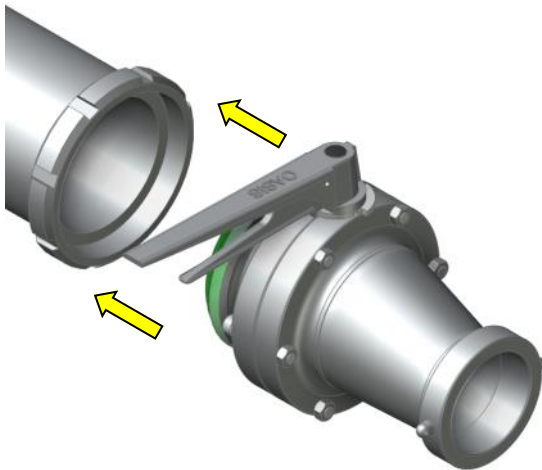


Check for excessive  
damage to sealing  
faces and threads

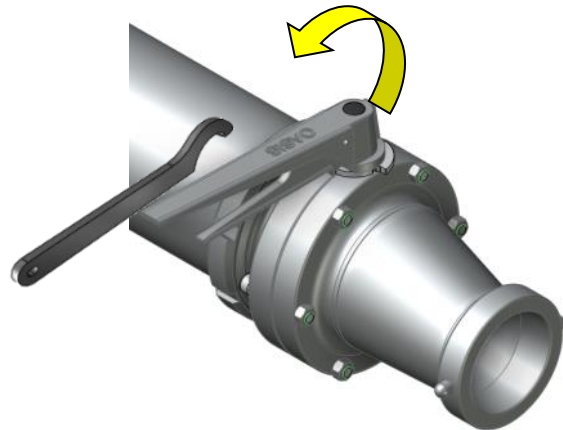
2. Put RJT seal on valve with food  
grade grease.



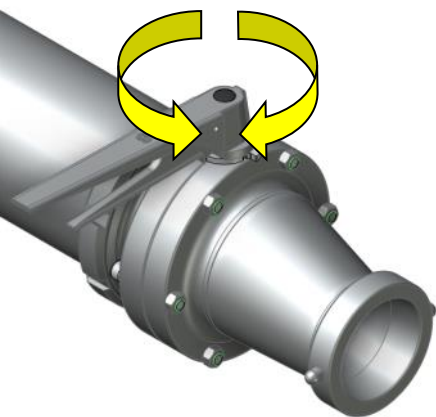
3. Line up valve with vat outlet.



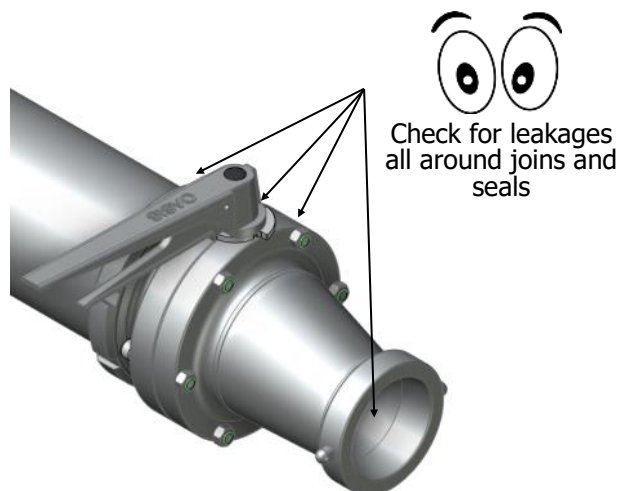
4. Tighten up RJT nut onto valve.



5. Cycle valve to make sure it works  
correctly.

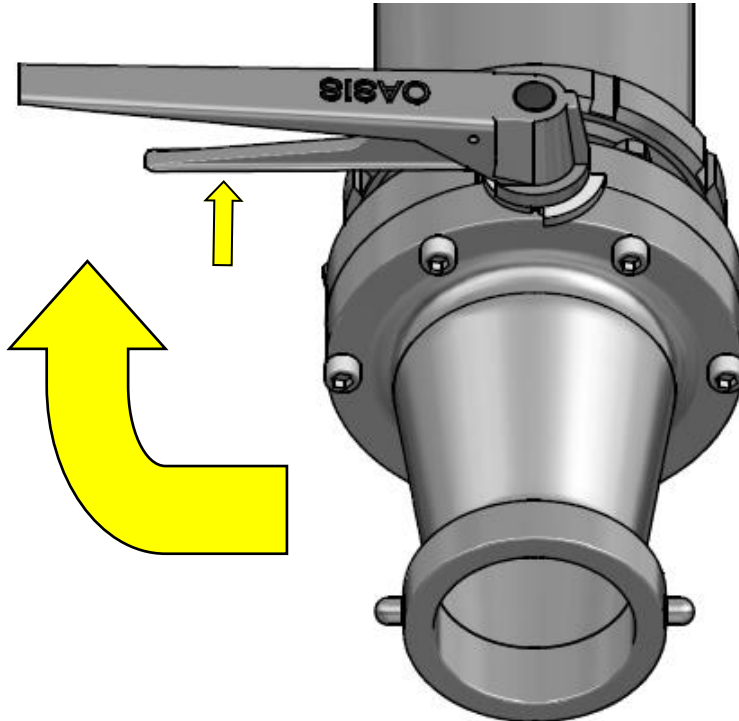


6. Check for leakages at plant start up.

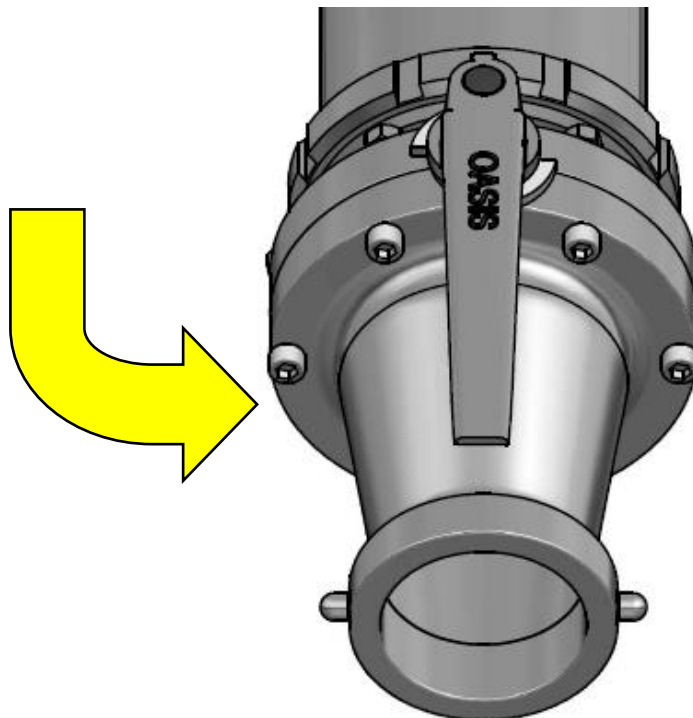


Check for leakages  
all around joins and  
seals

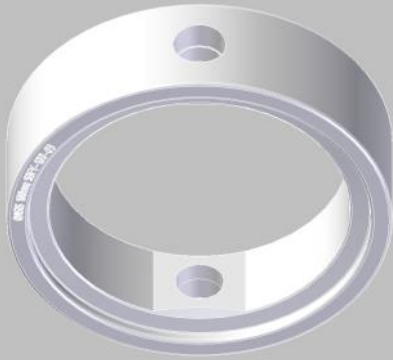
1. Closed position, squeeze handle and push towards the vat.



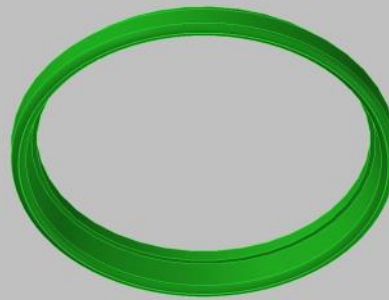
2. Open position, squeeze handle and pull away from the vat.



## Service Kit Parts



Seat



4" RJT Seal



2x Bearing Strips

**The Complete Oasis Seal Kit must be used**

## Tools Required



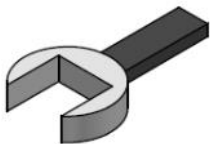
Food Grade Cleaner  
(FDA approved  
lubricant)  
(Warm Soapy Water  
or Similar)



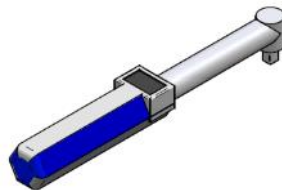
C Spanner



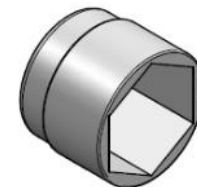
Food Grade Anti Seize  
Grease (Loctite 771 or  
Similar)  
For All Threads



Spanner  
(Wrenches)



Torque Wrench



Sockets  
- 13mm



Food Grade Grease  
(FDA approved  
lubricant)



Allen Key  
- 6mm

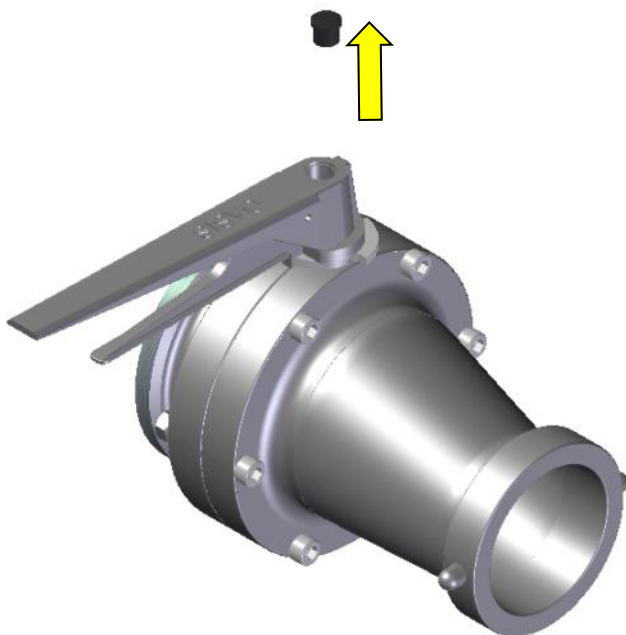
1. Turn handle into the closed position.



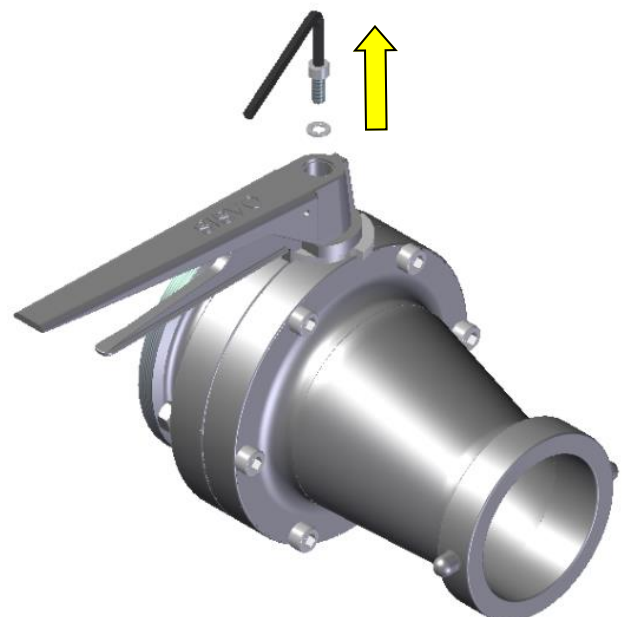
2. Remove valve from pipeline and remove RJT seal.



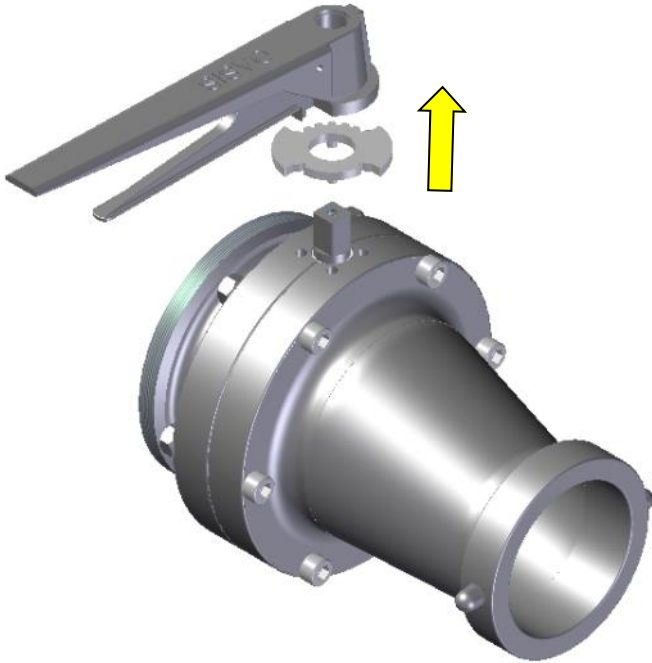
3. Remove plug from top of handle.



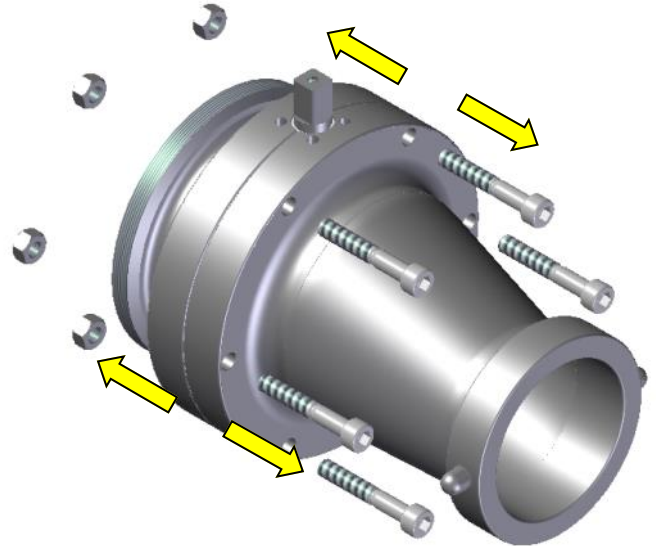
4. Remove screw and washer from inside of handle.



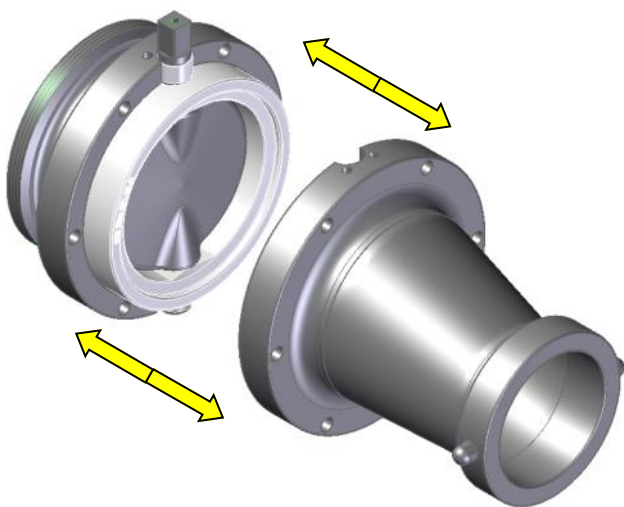
5. Remove handle and notch plate.



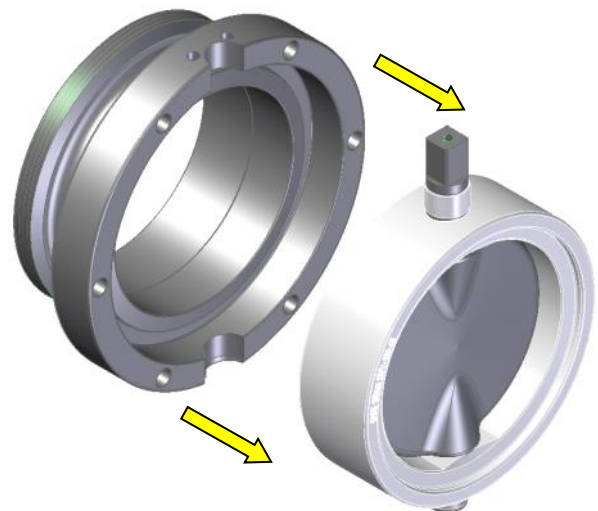
6. Remove body screws and nuts.



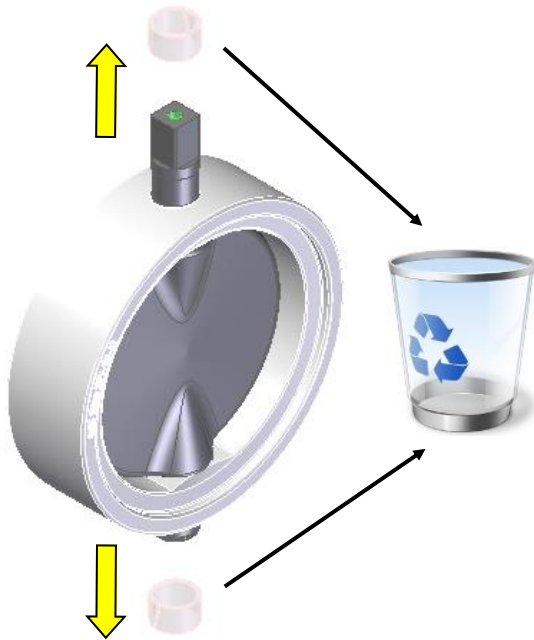
7. Pull body apart.



8. Remove seat and disc stem together away from the valve body.



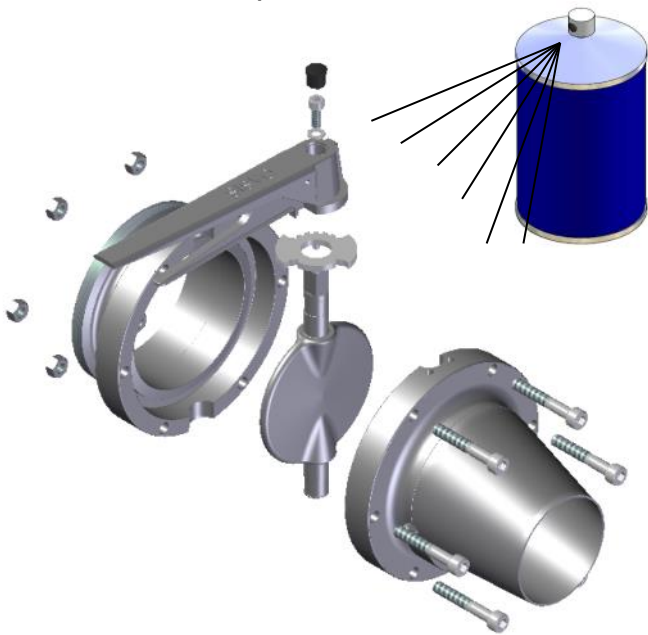
9. Remove upper and lower spit bearing.



10. Squash the seat over bottom then top of disc stem.



11. Clean all parts.



12. Disassembly complete.



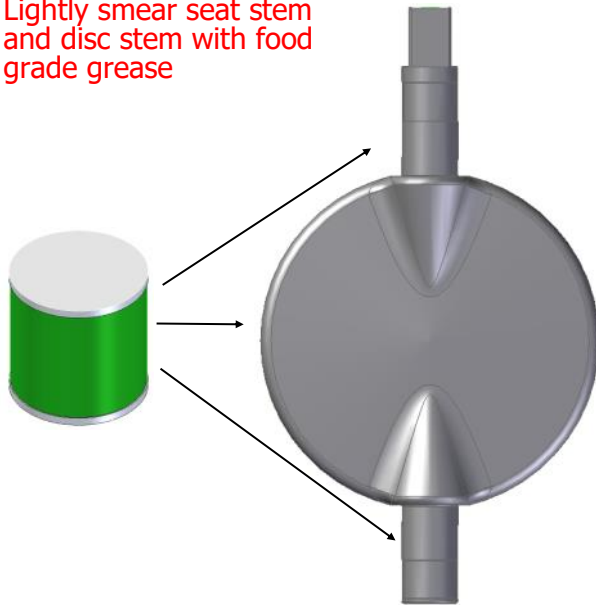
**Follow servicing assembly instructions  
on page 9 for assembly of product.**

Use a food grade cleaning product.  
Ensure all traces of fat and protein build up  
are removed.

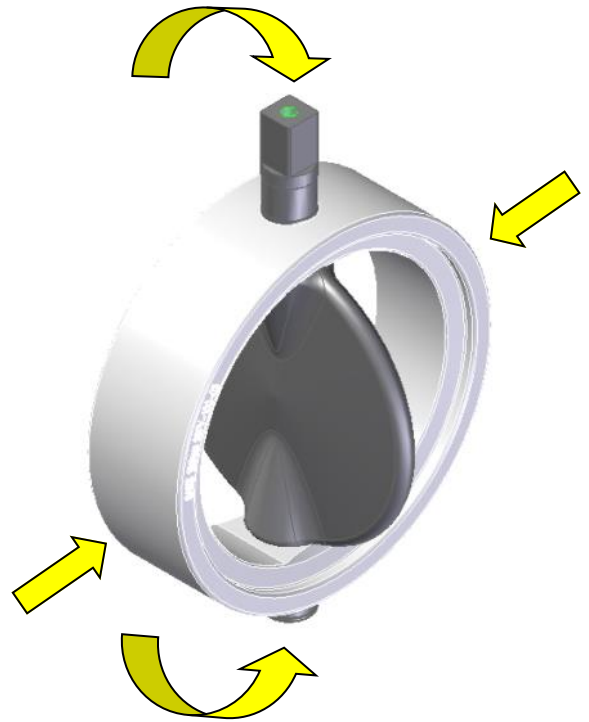


1. Lubricate disc and stem with a food grade FDA approved lubricant.

Lightly smear seat stem and disc stem with food grade grease



2. Insert seat over top and bottom disc stem in an open position.

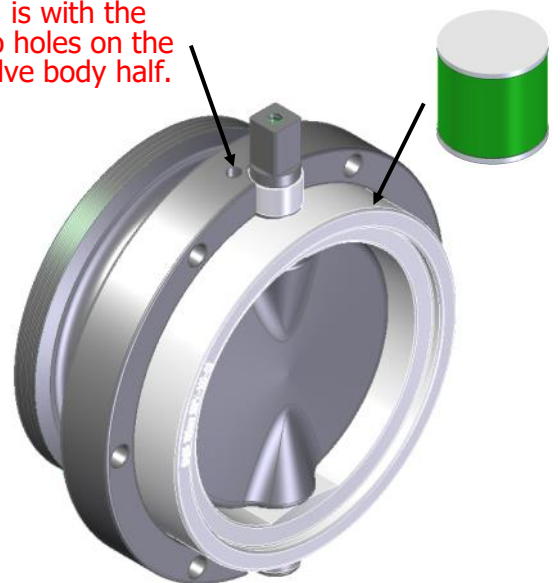


3. Install split bearings.



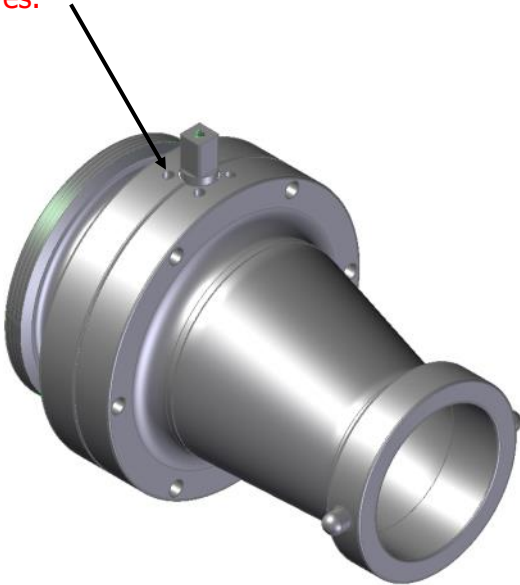
4. Position disc stem and seat with greased walls into one body half in closed a position.

Make sure square stem end is with the extra two holes on the top of valve body half.



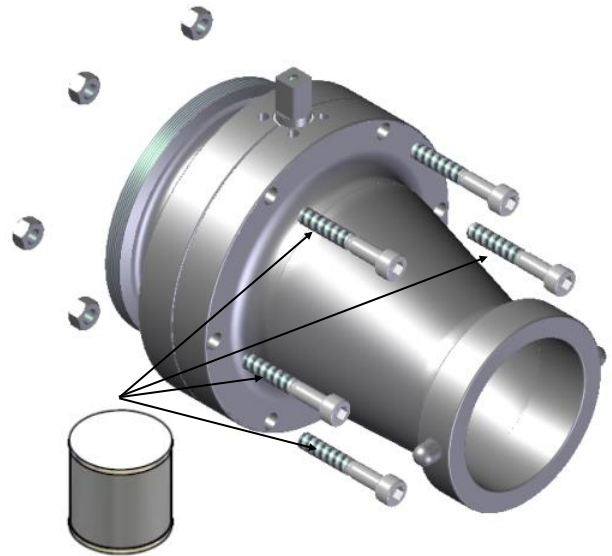
5. Align the two body halves and bring the two bodies together.

Ensure the bearings is still intact and not pinching between to halves.



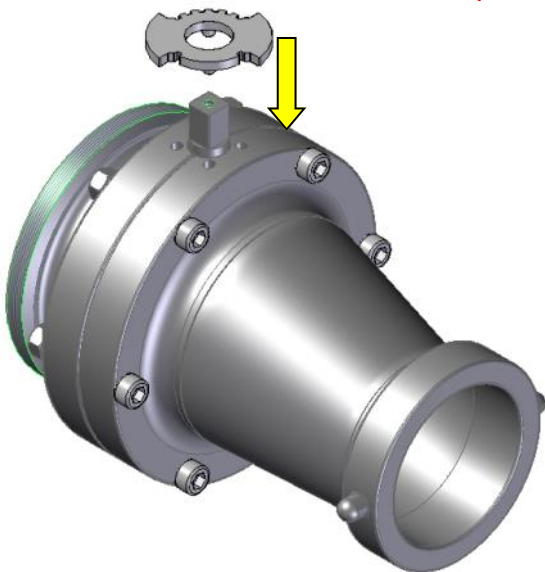
6. Apply food grade anti-seizes grease to bolts and install with nuts and tighten up.

Recommended torque for 4" valves = 18Nm



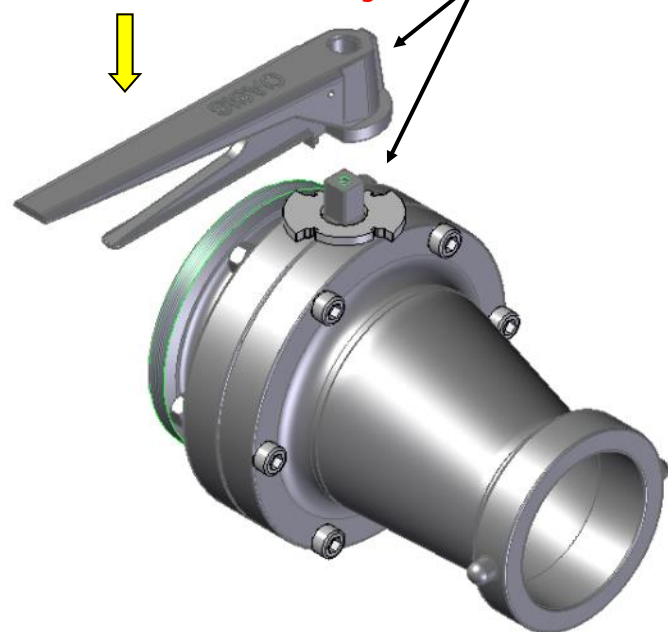
7. Fit notch plate over stem and locating lugs on the plate to the holes in the body.

Note where notches are facing is where the handle will point.

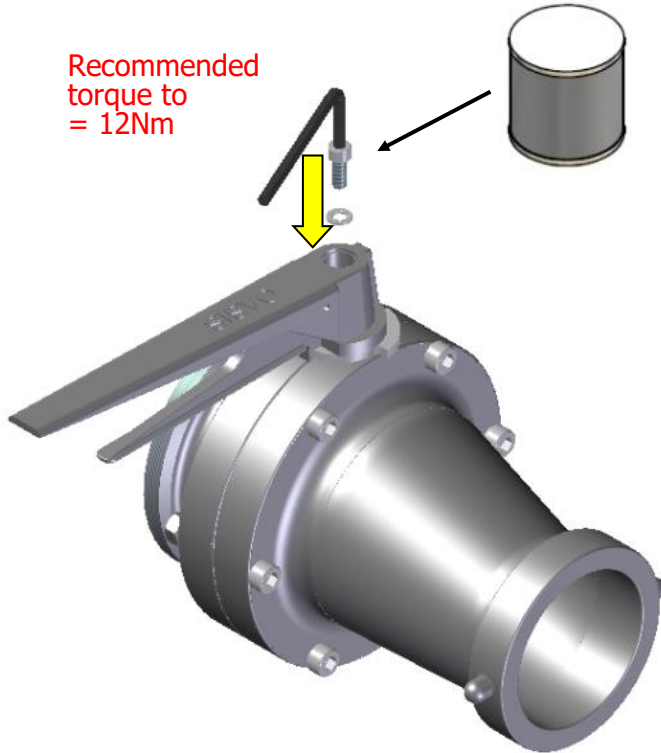


8. Fit handle onto the stem parallel to the disc.

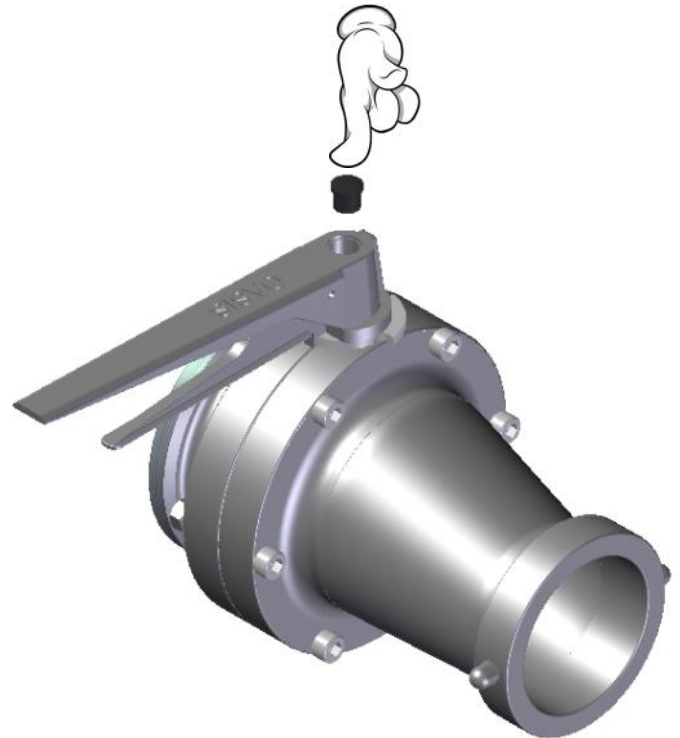
Make sure valve is in a close position when installing.



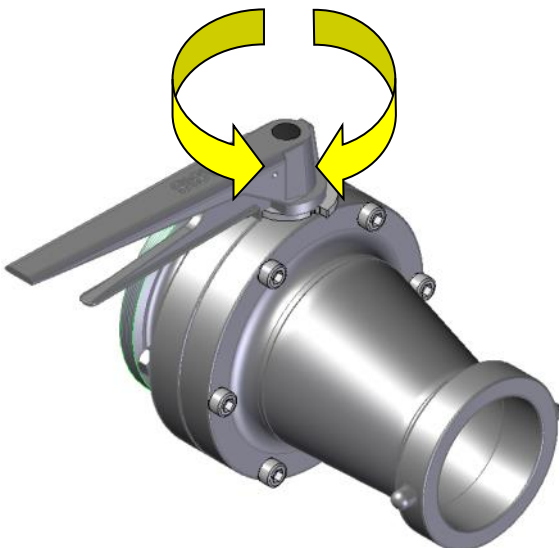
9. Fit washer and nut in handle and tighten up.



10. Push plug into handle by hand.



11. Cycle the valve 5 to 6 times to check assembly.



13. Servicing complete.



**Follow installation instructions on page 3 for re-installation of product.**