



# PV250-CIP

## Clean In Place Non Return Valve

### Instruction Manual

#### **▲ WARNING**

Failure to follow these instructions or to properly install and maintain this equipment could result in gas leakage, fire or explosion causing property damage and personal injury or death.

Oasis products must be installed, operated and maintained by trained and competent personnel in accordance with all applicable local codes, rules and regulations in addition to the Oasis Instructions.

Oasis Engineering Ltd. will not be held liable in such circumstances where installation, operation and maintenance procedures were performed by incompetent personnel resulting in improper assembly, unsafe operation, equipment damage or personal injury.

Oasis recommends that all service technicians should watch the Product Servicing Video before attempting to service this part.



Servicing Video

Oasis Engineering Ltd  
129 Birch Avenue, Tauranga, New Zealand.  
T: +64 7 928 3808  
E: [info@oasisNGV.com](mailto:info@oasisNGV.com)  
W: [www.OasisNGV.com](http://www.OasisNGV.com)



Instruction Manual

## Warning!

Ensure that the pipeline is relieved of all pressure and media before removing or installing a valve. Can cause serious harm to both infrastructure and personnel if safety precautions are not followed.

Oasis recommends considering the use of the following PPE when working with high pressure along with any other site specific health and safety requirements:



Foot Protection



Hearing Protection



Safety Helmets



Hand Protection

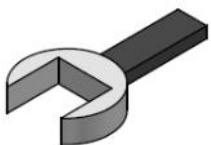


Safety Glasses



Ensure the system is clean of debris, drained & isolated before any installation or servicing work is carried out.

## Tools Required



Spanner  
(Wrenches)  
- 26mm



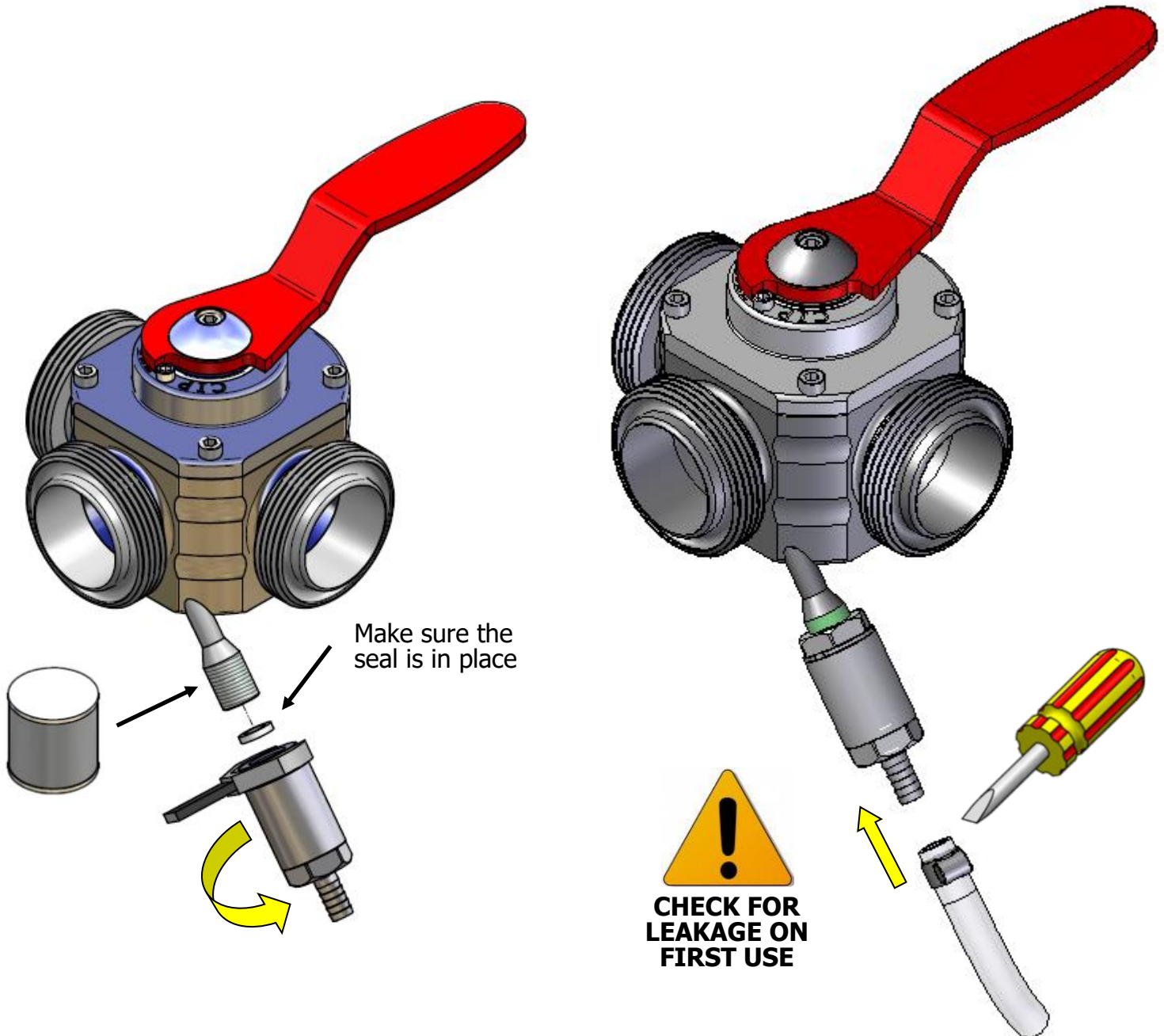
Food Grade  
Anti Seize



Screw Driver

1. Apply food grade anti seize to the valves riser nipple thread and install the CIP valve.

2. Install the CIP supply hose and fix with a hose clamp and test for leakage on first use.



## Service Kit Parts



1x End Cap O-Ring



1x Seal



1x Ball Spring



1x Shuttle



1x Sticker



1x Ball

**The Complete Oasis Seal Kit must be used**

## Tools Required



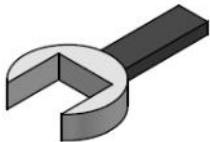
Food Grade Cleaner  
(Warm Soapy Water  
or Similar)



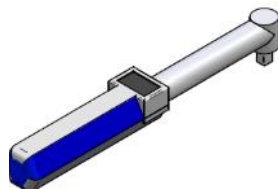
Pick Tool  
Part Number:  
TOOL-PICK  
(Sold separately )



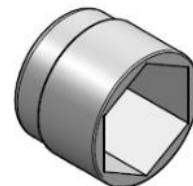
Food Grade  
Anti Seize



Spanners  
(Wrenches)  
- 26mm

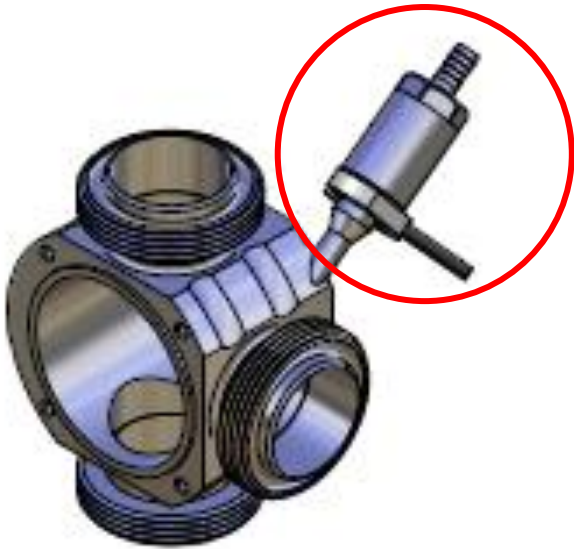


Torque Wrench

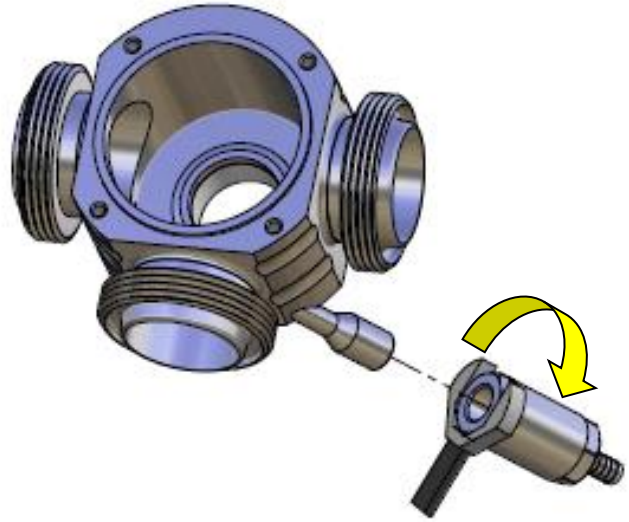


Sockets  
- 26mm

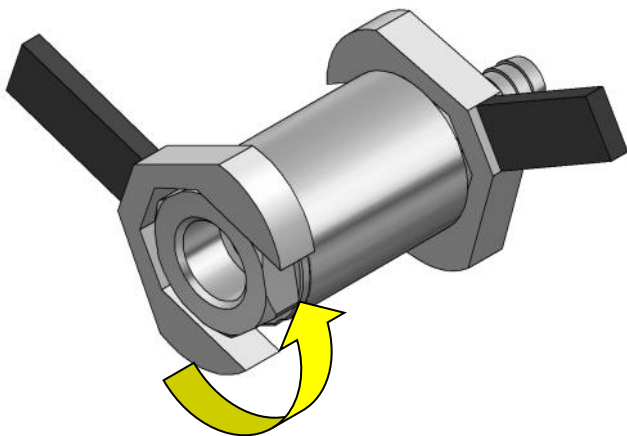
1. Locate the NRV to be serviced.



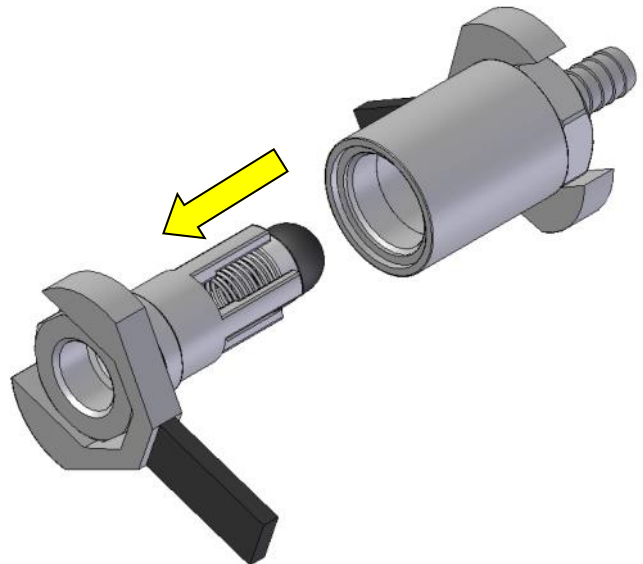
2. Remove the NRV from the body.



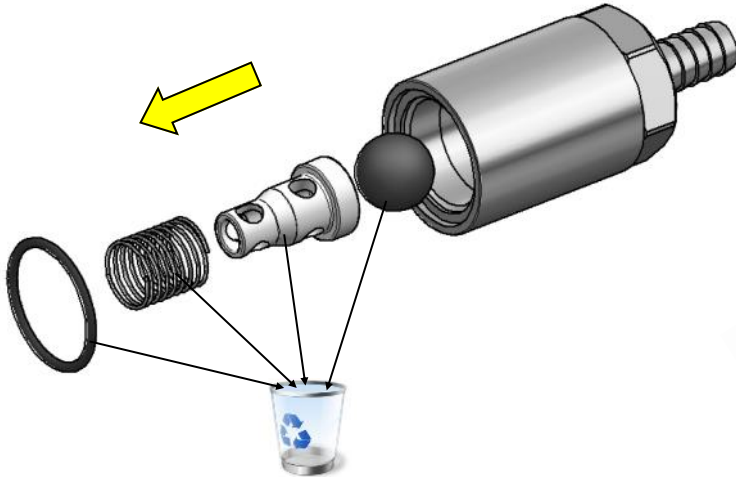
3. Loosen the valve end cap with a spanner.



4. Pull out the end cap.

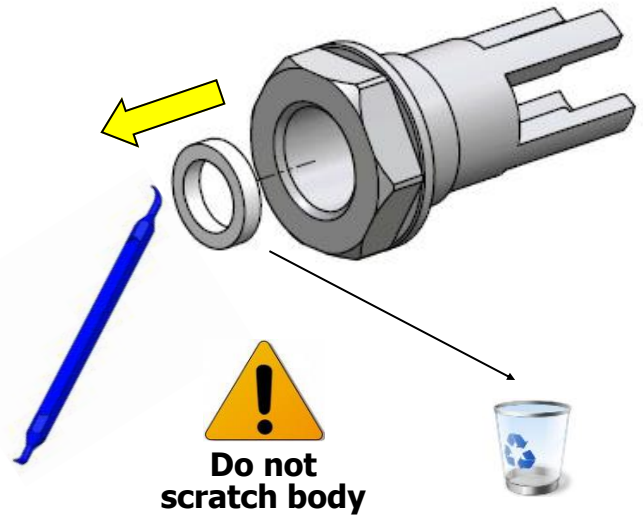


5. Discard the O-ring, spring, shuttle and ball.



**NOTE: If servicing an earlier version of the NRV, the shuttle may not be present. The shuttle is a part of the REV C retrofit kit.**

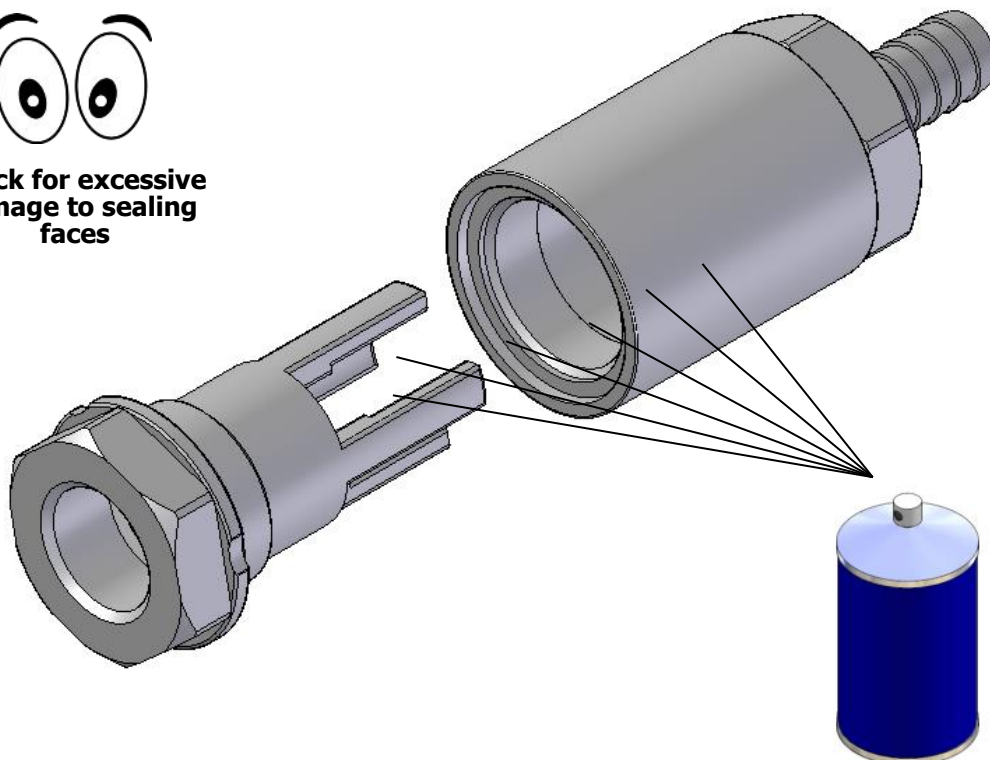
6. Use a pick to remove the seal from inside the end cap. Discard seal.



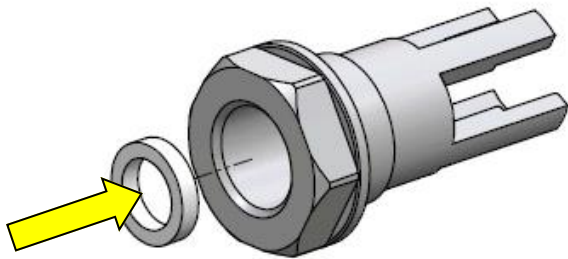
7. Clean components and inspect for damage.



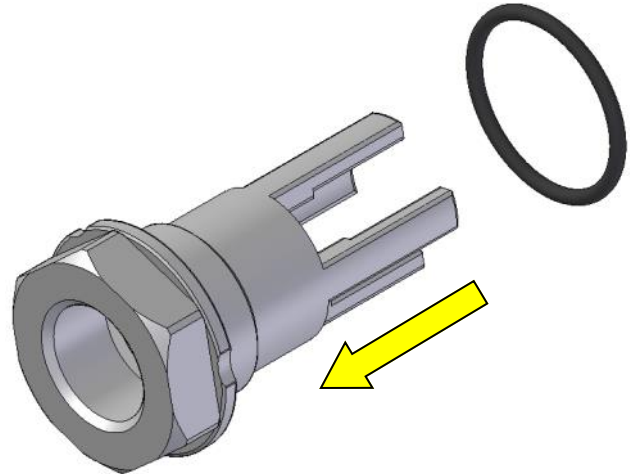
**Check for excessive  
damage to sealing  
faces**



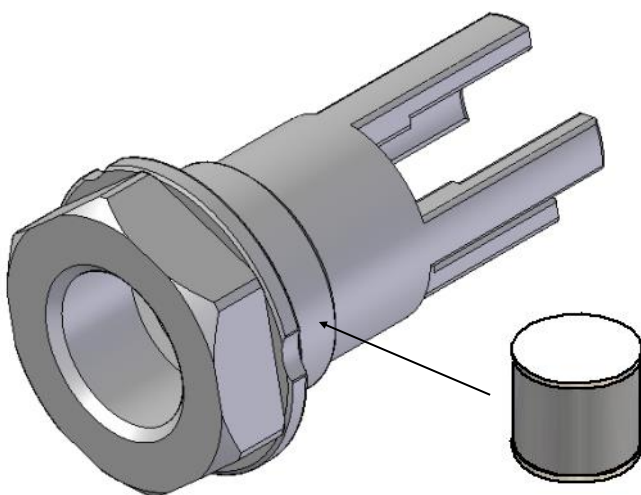
1. Install the outlet seal.



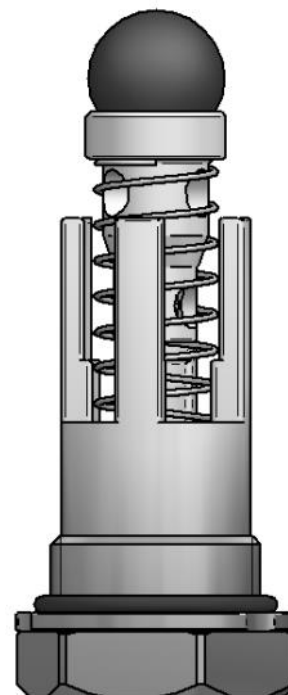
2. Install the O-ring onto the end cap.



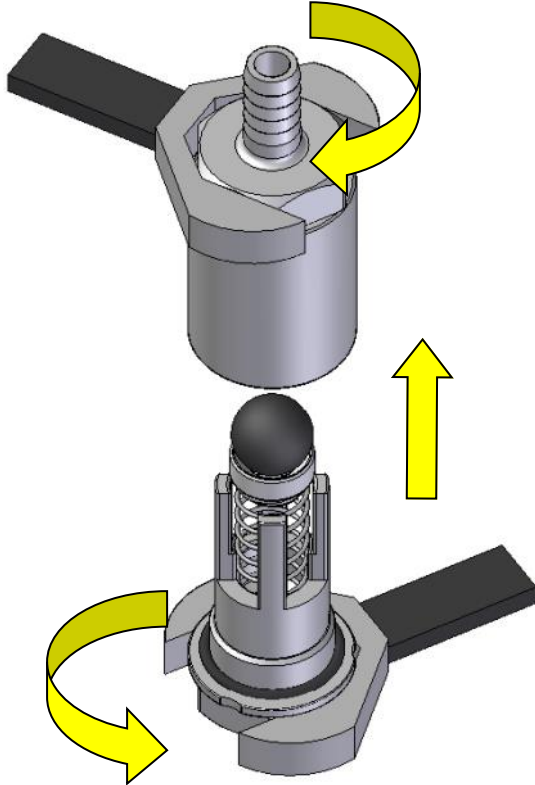
3. Apply food grade anti seize to the end cap thread.



4. Install the new spring, shuttle and ball into the end cap.



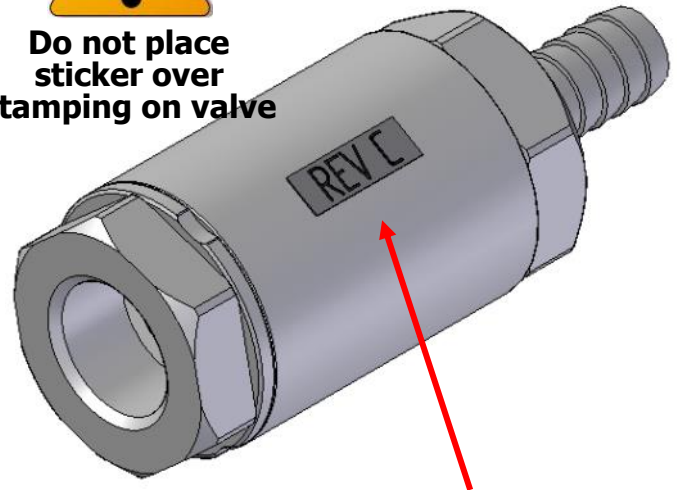
5. Screw the end cap into the CIP valve body and tighten to 15Nm.



6. Place "REV C" sticker on the side of the valve.



**Do not place sticker over stamping on valve**



**Clean surface before applying sticker.**  
Surface of valve must be completely free from any contaminants, grease and oils before applying sticker. For best results, clean with Lacquer Thinner or Acetone.

7. Servicing complete, follow the installation instructions on page 3 to re-install the CIP valve.

